

ACTIVITY 8

BRYOPHYTES

Examination of *Marchantia* and *Funaria*

(i) MARCHANTIA

Male *Marchantia* Plant with Male Receptacle

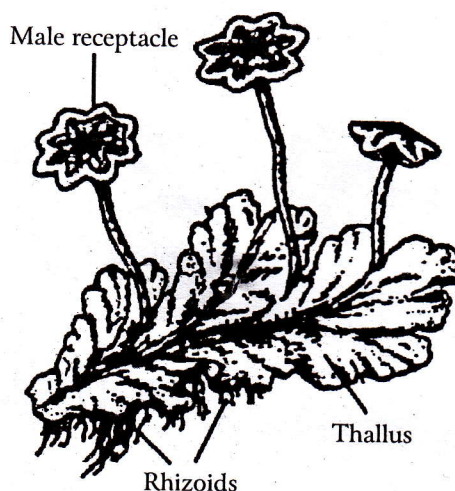


Fig. 18: *Marchantia* Male Gametophyte

1. *Marchantia* is a member of group Bryophyta. Its plant body is called **thallus**. It is dichotomously branched and each branch has a distinct midrib and a notch at the apex.
2. On the under surface of thallus a number of unicellular **rhizoids** arise which absorb water and mineral salts from the soil.
3. On the midrib of each branch a number of cup like structures are produced, called **gemma cups**. These are vegetative reproductive bodies.
4. From the notch of male *Marchantia* plant, a branch arises, called **antheridiophore**.
5. At the tip of antheridiophore disc-like **male receptacle** is developed.
6. The male receptacle produces many antheridia at the upper side.
7. The antheridia are developed in **antheridial cavities**.
8. The antheridia produce antherozoids (male gametes).