

Family — CAESALPINIACEAE

Type — *Caesalpinia pulcherrima* (Gold Mohur)

Floral Characters:

Inflorescence: Raceme.

Flower: Pedicellate, bracteate, bisexual, complete, zygomorphic, perigynous, showy yellow or reddish yellow.

Calyx: 5 sepals, polysepalous, petaloid (show colour of petals), imbricate aestivation, the lowest sepal is the largest one and hooked.

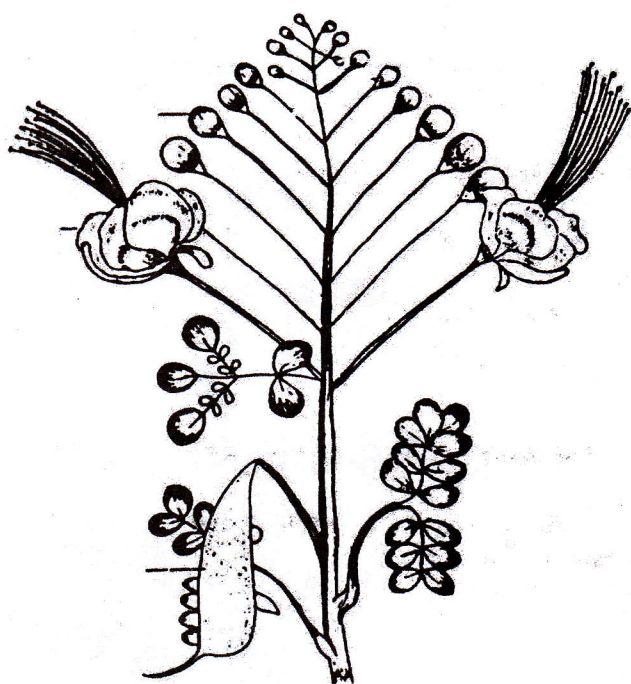
Corolla: 5 petals, polypetalous, caesalpinaceous, odd petal small and posterior, imbricate-ascending aestivation, the posterior petal is small and innermost.

Androecium: 10 stamens, polyandrous, filaments are of unequal size, arranged in two whorls of five each, anthers ditheous (2-lobed), dorsifixed.

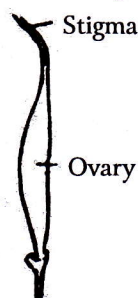
Gynoecium: Monocarpellary, ovary half inferior, half superior, unilocular, many ovules along the margin, style long, stigma simple.

Placentation: Marginal.

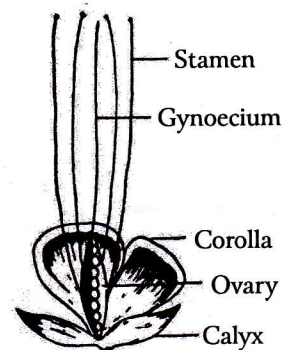
Floral Formula: \oplus , ♀ , K_5 , C_{4+1} , A_{5+5} , \underline{G}_1



Inflorescence of *Caesalpinia pulcherrima* (gulmohur)
(A typical Raceme of Racemose)



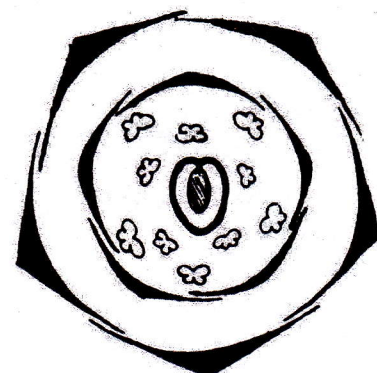
Simple pistil of one carpel



L.S. of a flower



T.S. of ovary



Floral diagram

Fig. 46: *Caesalpinia pulcherrima* of Caesalpinaceae