

Family — CAESALPINIACEAE

Type — *Cassia fistula*

Floral Characters:

Inflorescence: Racemose, raceme or panicle.

Flower: Pedicellate, complete, bisexual, zygomorphic, hypogynous or slightly perigynous, bracteate.

Calyx: 5 sepals, polysepalous, aestivation-imbricate, odd sepal is at anterior side, inferior.

Corolla: 5 petals, polypetalous, aestivation is ascending imbricate, posterior petal is inner most, inferior.

Androecium: 10 stamens, polyandrous, unequal size, the lowest three stamens are long with curved filaments, 4 lateral stamens are shorter and upper most three are very reduced in size, called **stamenoids**, ditheous, dorsifixed, introse.

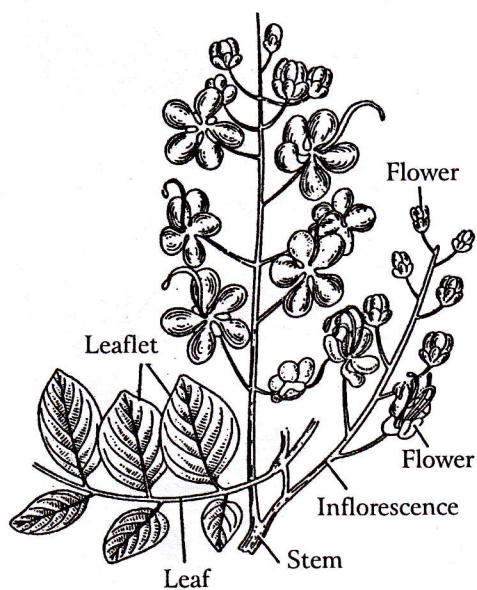
Gynoecium: Monocarpellary, ovary superior, unilocular, ovules along the margin of ovary, style short, stigma terminal and hairy.

Placentation: Marginal

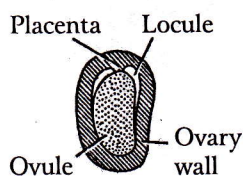
Fruit: Legume, internally divided into one-seeded chambers.

Seed: Albuminous

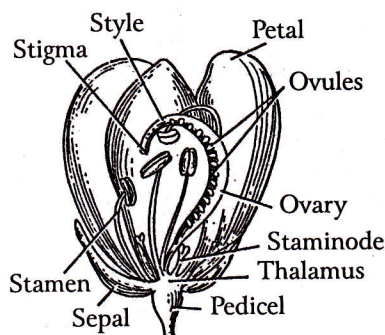
Floral Formula:  $\dagger$  ,  $\text{♀}$  ,  $K_{(5)}$  ,  $C_5$  ,  $A_3$  stamenoid , + 4 + 3 ,  $\underline{G}_1$



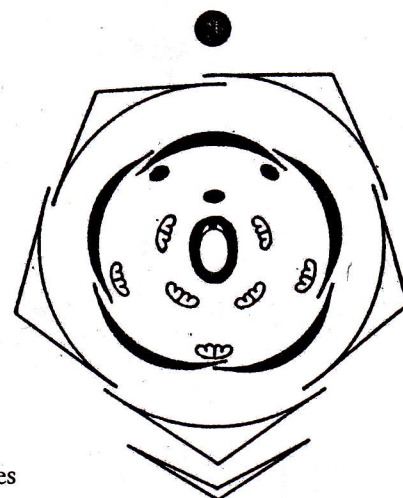
FLOWERING TWIG



T.S. OVARY



L.S. FLOWER



FLORAL DIAGRAM

Fig. 45: Caesalpinaceae. *Cassia fistula* Linn.; Eng., Golden Shower; Verna., Amaltas