

**PART - D**  
**DESCRIPTION OF PLANT  
AND FAMILIES**

**ACTIVITY 17**

**DESCRIPTION OF FLORAL PARTS  
OF PLANT**

**Description of Flower of Family**

**(A) Technical Terms used to describe an Angiospermic Flowers:**

**Pedicellate:** Flower with stalk, pedicel.

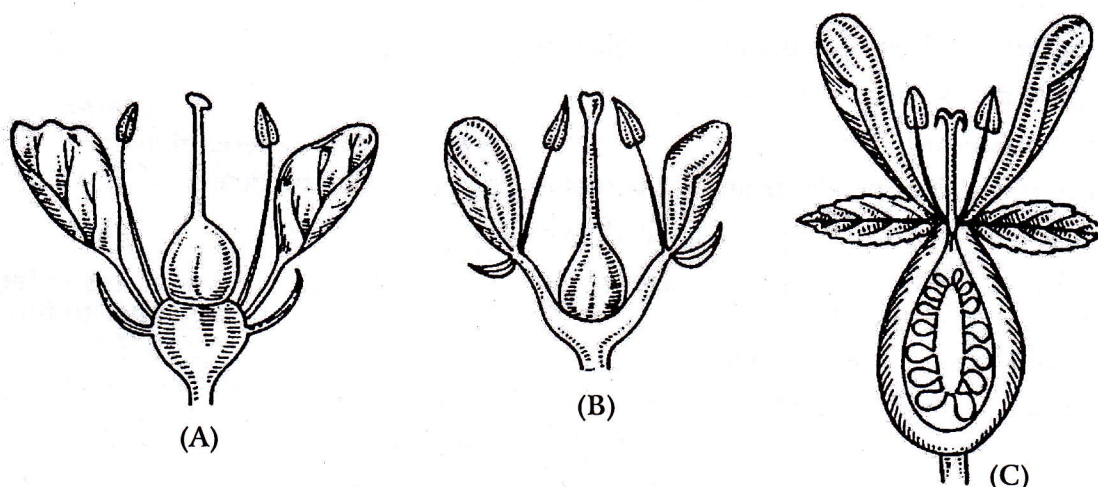
**Sessile:** Flower without stalk.

**Subsessile:** Flower with small stalk

**Bracteate:** Flower has a small leafy structure at the base, bract.

**Ebracteate:** Flower without bract.

**Complete:** Flower with all parts.



**Fig. 34: Position of Floral Leaves on the Thalamus.**  
**(A) Hypogyny; (B) Perigyny; (C) Epigyny.**