

Family — FABACEAE (Papilionaceae)

Type — *Clitoria ternatea* (Butterfly Pea)

adelphous → stamens present in bundle,
mono di poly filaments fused,
anthers free

Floral Characters: Inflorescence: The flower arises solitary in the axile of the leaf or in racemose manner



Flower: Pedicellate, bracteate, complete, bisexual, zygomorphic, hypogynous, pentamerous, blue.

Calyx: 5 sepals, gamosepalous, valvate, campanulate (bell-shaped), green.

Corolla: 5 petals, polypetalous, vexillary, papilionaceous, one posterior petal is the largest one, called **standard** or **vexillum**, two lateral petals, called **wings** or **alae** and two small petals unite together to form boat-shaped structure, called **keel** or **carina**, blue colour.

carina → inner most, fused
standard → big, outer most
wings → inner, wings like

Androecium: 10 stamens, diadelphous (9) + 1. Nine united form a tube around the ovary and one free, basifixed, introse. → facing of anthers → anthers facing inward to ovary

Gynoecium: Monocarpellary, ovary superior, unilocular, many ovules along the margin.

Placentation: Marginal.

Floral Formula: $\dagger, \text{♀}, K_{(5)}, C_{1+2+(2)}, A_{(9)+1}, \underline{G}_1$

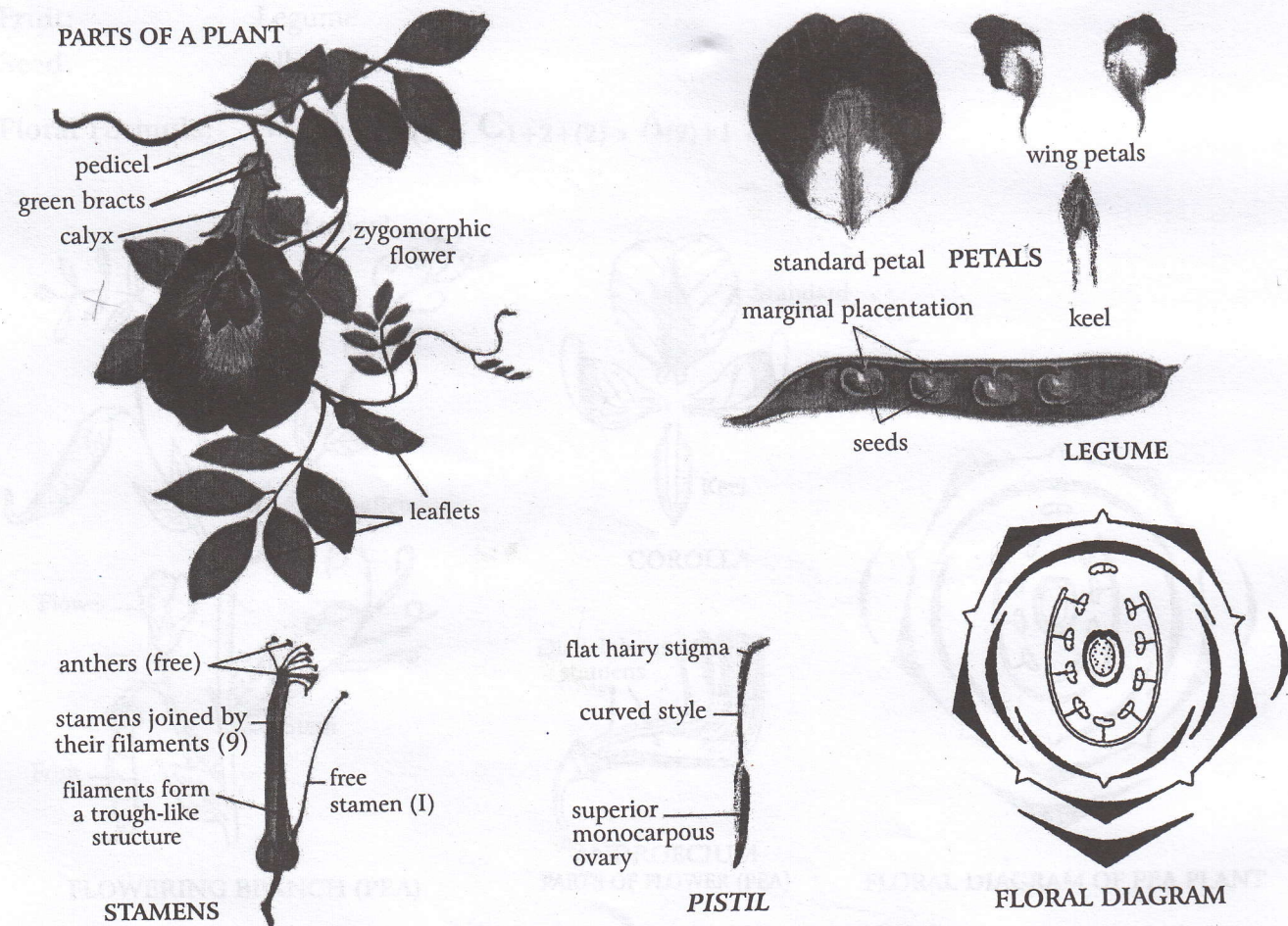


Fig. 43: *Clitoria ternatea* (Family - Fabaceae)