

Family — FABACEAE (Papilionaceae)

Type — *Lathyrus odoratus* (Sweet Pea - Phul Muttar)

Floral Characters:

Inflorescence: Racemose or solitary axillary.

Flower: Pedicellate, complete, bisexual, zygomorphic, hypogynous, pentamerous, bracteate.

Calyx: 5 sepals, gamosepalous, aestivation, valvate, campanulate, inferior, green.

Corolla: 5 petalous, polypetalous, aestivation, vexillary, papilionaceous. The posterior largest petal is called **standard** or **vexillum**, two lateral petals are called **Wings** or **alae**. Two inner petals slightly unite together to form a boat-shaped structure, called **Keel** or **Carina**, descending imbricate, inferior.

Androecium: 10 stamens, 9 are united, one is free (9)+1, diadelphous, 9 stamens unite together to form a tube around the ovary, basifixed, introse, covered by Keel.

Gynoecium: Monocarpellary, ovary superior, unilocular, ovules along the margin of ovary, style long, stigma terminal, slightly hairy, nectar disc is present at the base.

Placentation: Marginal

Fruit: Legume

Seed: Albuminous

Floral Formula: $\dagger, \text{♀}, K_{(5)}, C_{1+2+(2)}, A_{(9)+1}, \underline{G}_1$

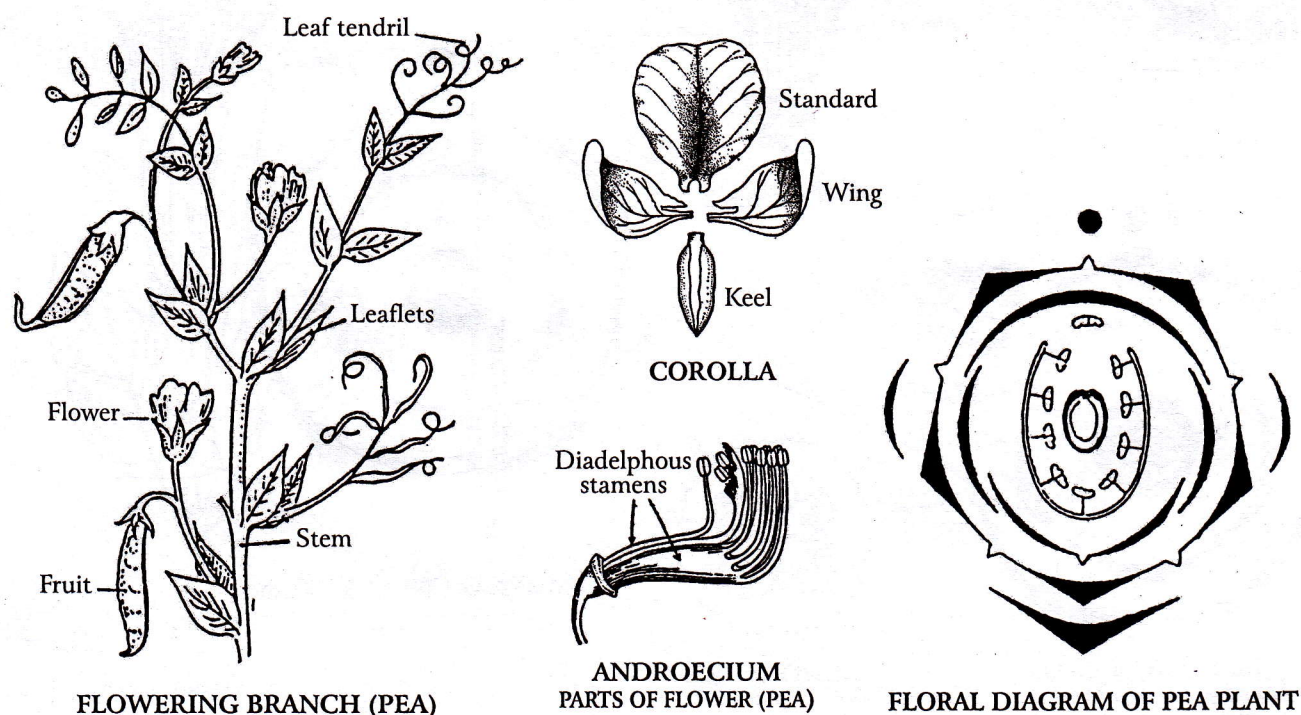


Fig. 42: Family – Fabaceae — *Lathyrus odoratus* (Sweet Pea)