

Family — FABACEAE (Papilionaceae)

Type — *Sesbania sesban* (Linn.) Merr. Jait (Urdu)

Floral Characters:

Inflorescence: Racemose raceme.

Flower: Pedicellate, bracteate, bisexual, complete, zygomorphic, hypogynous, pentamerous.

Calyx: 5 sepals, gamosepalous, valvate-aestivation, campanulate (bell-shaped), green.

Corolla: 5 petals, polypetalous, vexillary-aestivation, papilionaceous, one large petal is **standard** or **vexillum**, two side petals are **wings** or **alae**, two inner small petals unite together to form boat shaped structure, called **keel** or **carina**, yellow.

Androecium: 10 stamens, diadelphous (9)+1, nine united form a tube around the ovary and one free, basifixed, introrse.

Gynoecium: Monocarpellary, ovary superior, unilocular, many ovules along the margin.

Placentation: Marginal

Floral Formula:  $\dagger, \text{♀}, K_{(5)}, C_{1+2+(2)}, A_{(9)+1}, \underline{G}_1$

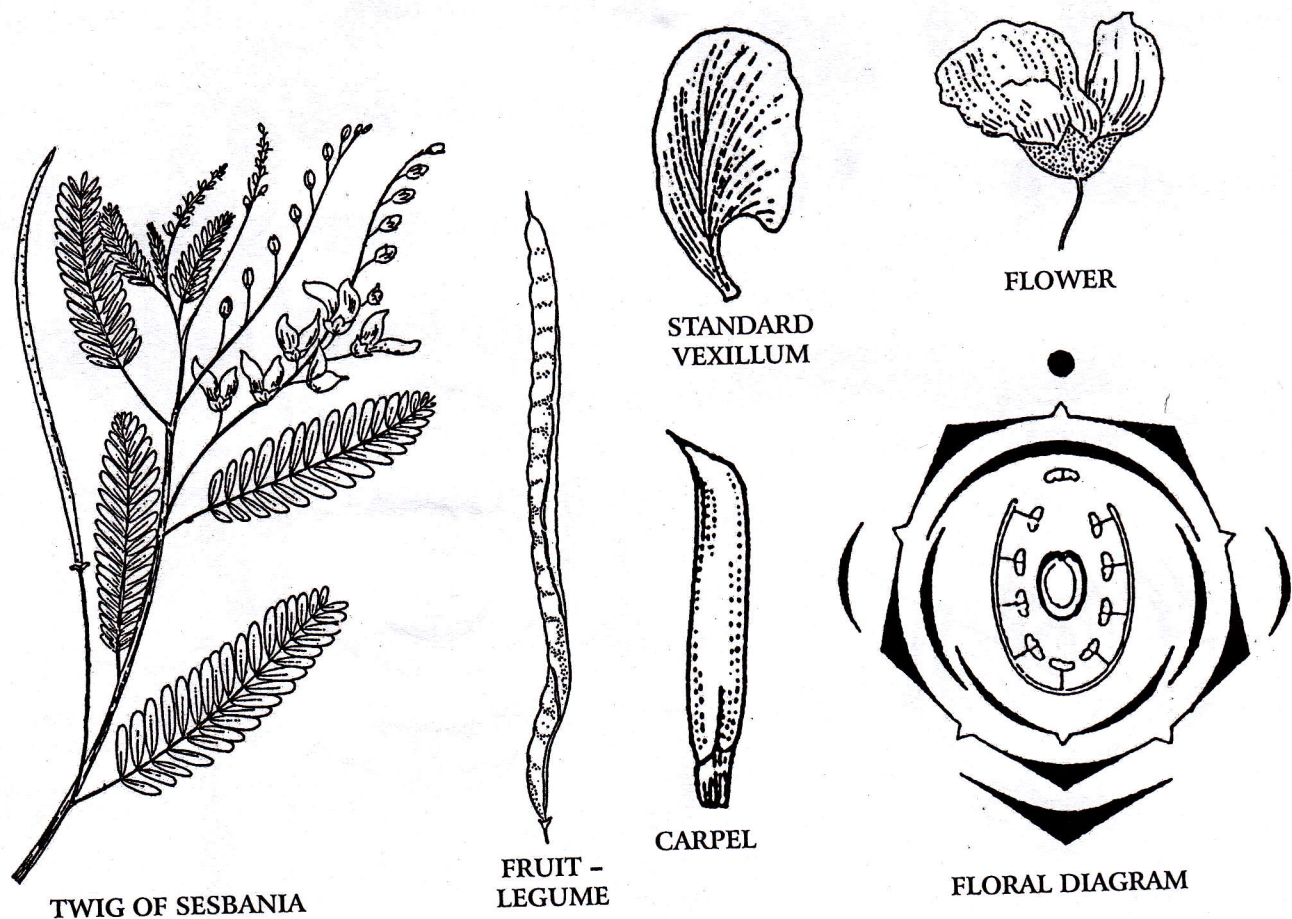


Fig. 44: Fabaceae (Papilionaceae): *Sesbania sesban*