

## Female Marchantia Plant

1. *Marchantia* is a member of group Bryophyta. Its plant body is called **thallus**. It is dichotomously branched and each branch has a distinct midrib and a notch at the apex.
2. On the under surface of thallus a number of unicellular rhizoids arise which absorb water and mineral salts from the soil.
3. On the midrib of each branch a number of cup like structures are produced, called **gemma cups**. These are vegetative reproductive bodies.
4. From the female plant a branch arises, called **archegoniophore**.
5. At the tip of archegoniophore **star-shaped female receptacle** is developed. It has many arms or rays.
6. The female receptacle produces many **archegonia** from the lower region, which are the female reproductive organs.

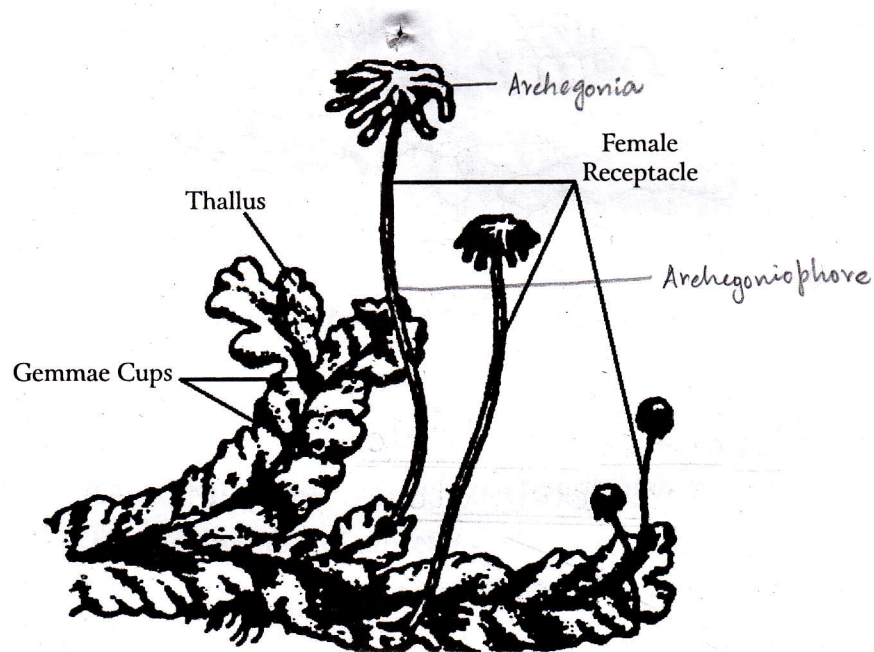


Fig. 19: *Marchantia* Female Gametophyte