

(ii) FUNARIA

Funaria Plant with Sporophyte

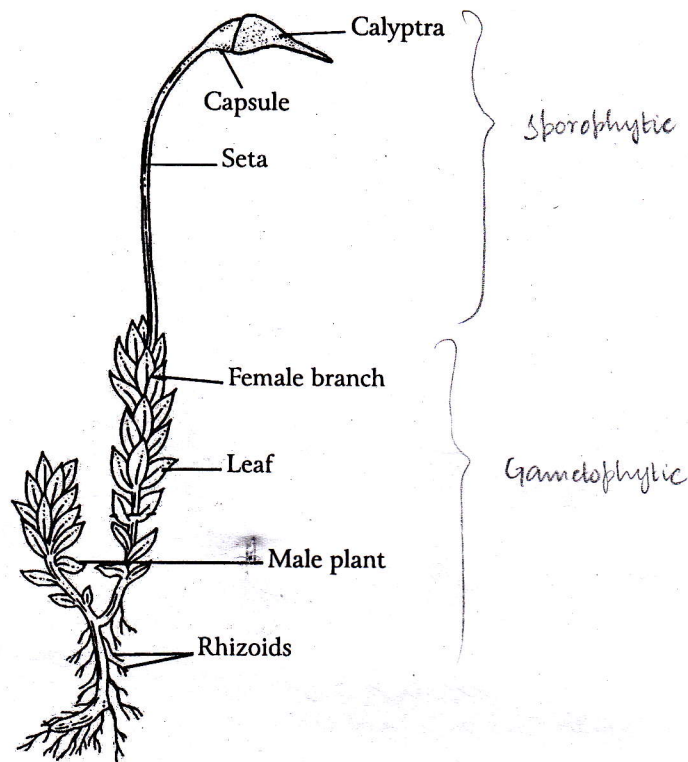


Fig. 21: *Funaria* spp. Male and Female Shoots with Sporophyte

1. *Funaria* is a common moss. It grows on moist and shady places.
2. *Funaria* is differentiated into **stem** and **leaves**.
3. The stem is unbranched or branched. It is covered by leaves.
4. From the lower part of stem numerous **rhizoids** arise which help in the fixation of plant and absorption of water from the soil.
5. The leaves are sessile and simple. They are spirally arranged on the stem.
6. The leaves perform the function of photosynthesis.
7. At the upper region the leaves are arranged in the form of a crown-shaped structure.
8. Sporophyte grows upon *Funaria* gametophyte. It consists of **Foot**, **Seta** and **Capsule**.
9. In the capsule spores are produced.