

Family — MIMOSACEAE

Type — *Acacia arabica* (Kikar)/*Acacia nilotica*

Floral Characters:

Inflorescence: Axillary cymose head.

Flower: Sessile, complete, bisexual, actinomorphic, hypogynous, small, bracteate.

Calyx: 5 sepals, gamosepalous, campanulate, small, slightly petaloid, aestivation valvate, inferior.

Corolla: 5 petals, gamopetalous, aestivation valvate, tubular, inferior.

Androecium: Numerous, polyandrous, filaments long and conspicuous, anther small and versatile, ditheous, dorsifixed, introse.

Gynoecium: Monocarpellary, ovary superior, unilocular, ovules are arranged along the margin, style long, stigma minute.

Placentation: Marginal.

Fruit: Legume, lomentus, pod consists of 10-12 parts.

Seed: Ex-albuminous

Floral Formula: \oplus , ♀ , $K_{(5)}$, $C_{(5)}$, A_{∞} , \underline{G}_1

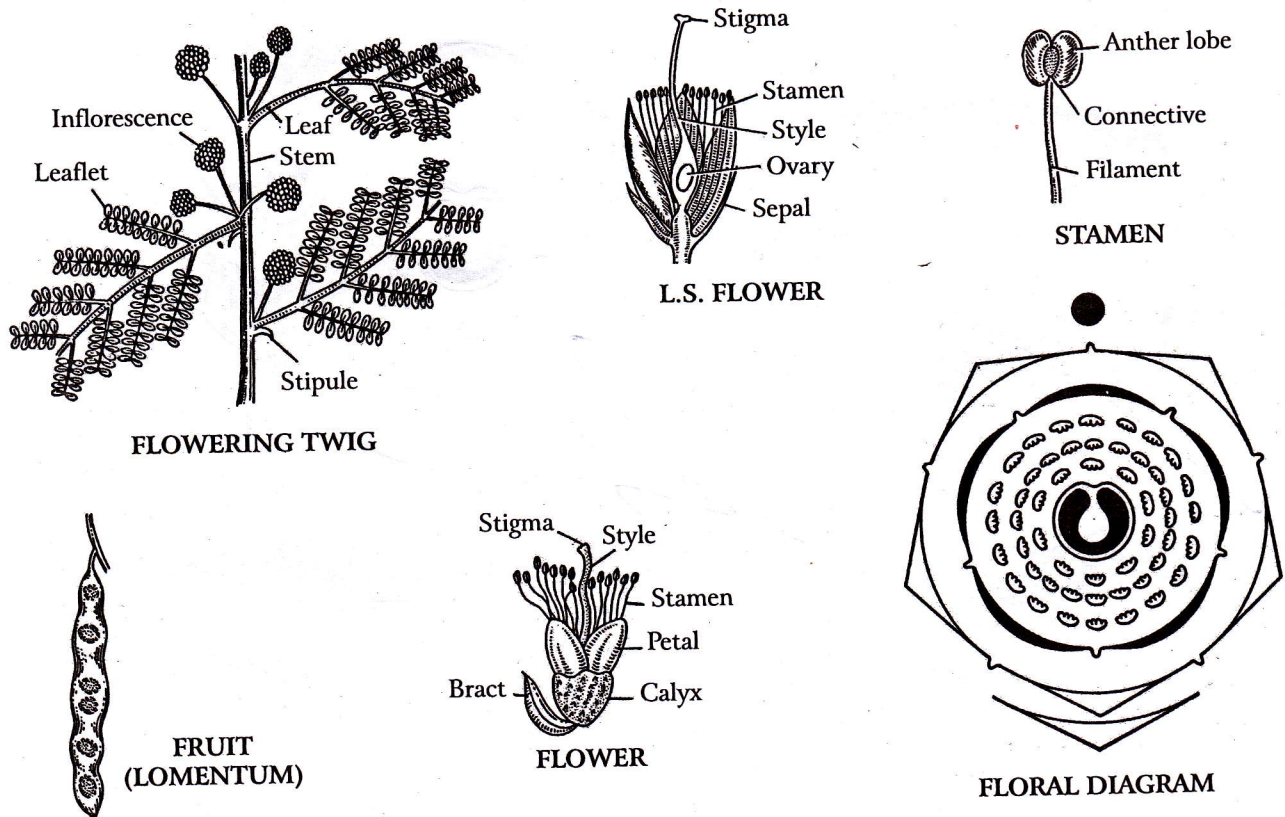


Fig. 48: Mimosaceae (Leguminosae). *Acacia nilotica* (Linn.)
Del.; Eng., Babul Acacia; Verna., Babul, Kikar.