

# ACTIVITY 18

## FAMILIES

Family — ROSACEAE

Type — *Rosa indica* (Gulab)

### Floral Characters:

arrangement  
of flower

**Inflorescence:** Big solitary flowers.

**Flower:** Pedicellate, complete, bisexual, actinomorphic, perigynous, ebracteate, red, pink or white.

**Calyx:** 5 sepals, gamosepalous, narrowly lanceolate tubular, valvate-aestivation or quinquecordate aestivation, inferior, calyx tube is formed around gynoecium.

**Corolla:** Petals multiple of five, polypetalous, rosaceous, imbricate aestivation, conspicuous, coloured.

**Androecium:** Numerous, polyandrous (Free), inferior, filaments are of unequal size anther ditheous, dorsifixed, introrse, exerted.

**Gynoecium:** Carpels many, <sup>basifixed</sup> apocarpous, ovary <sup>1/2 inferior</sup> 1/2 superior, each ovary is unilocular, covered by calyx-tube, one ovule in each ovary, present in the base.

**Placentation:** Basal.

**Floral Formula:**  $\oplus$ ,  $\text{♀}$ ,  $K_{(5)}$ ,  $C_{5.\infty}$ ,  $A_{\infty}$ ,  $\underline{G}_{\infty}$

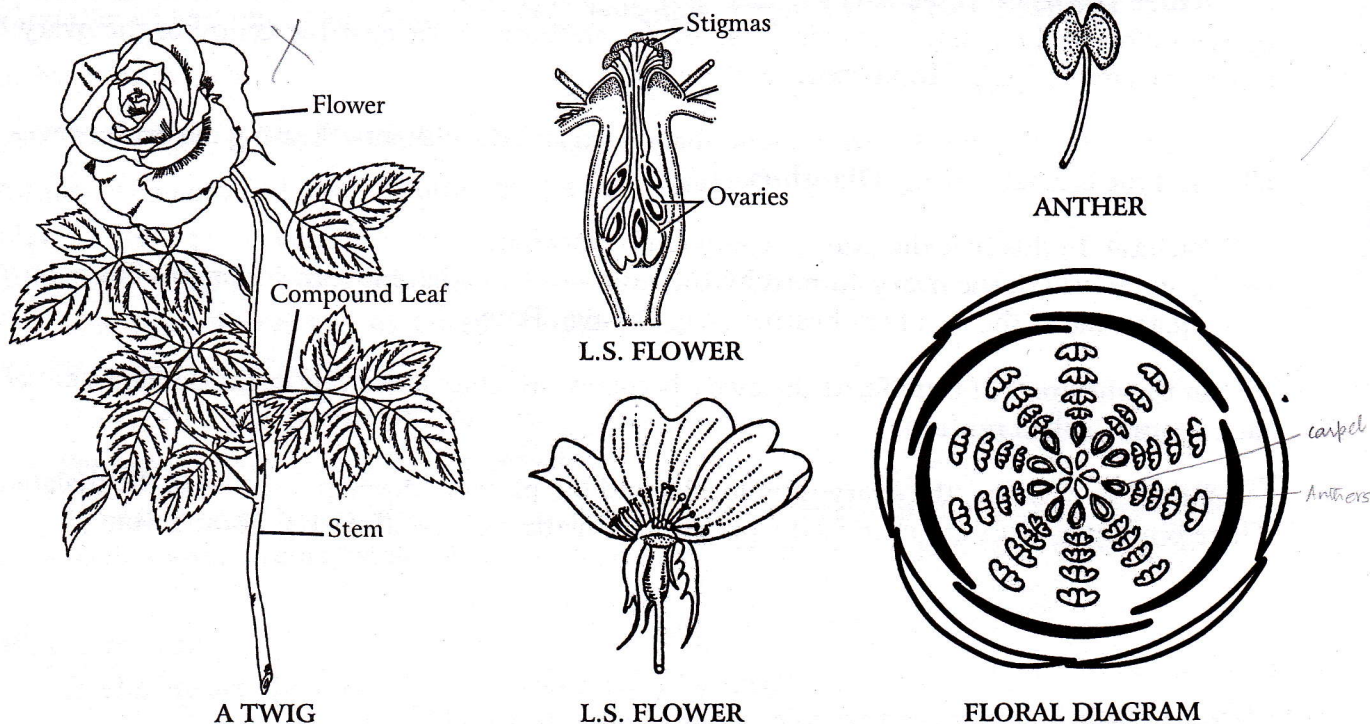


Fig. 38: Rosaceae. *Rosa indica* L.; Eng., Rose; Verna. Gulab