

## Slide of Structure of Sorus of Fern (Spot)

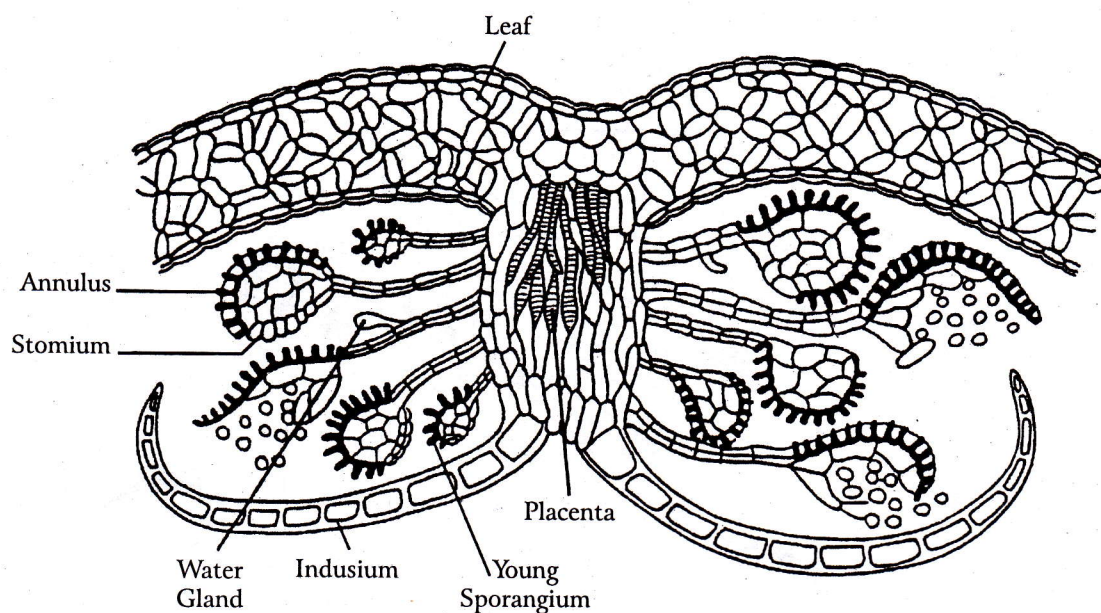


Fig. 24: *Fern* T.S. of Sporophyll Showing Sporangia.

1. On the under surface of the **sporophylls** (mature leaves) of Fern many dark brown structures are produced, called **sori**.
2. Each **sorus** consists of many **sporangia**.
3. The sporangia are covered by a protective shield like covering, called **indusium**.
4. The sporangia and indusium are developed from an outgrowth of leaf, called **placenta**.
5. Each sporangium consists of two parts, **stalk** and **capsule**.
6. Inside the capsule many **spores** are produced.
7. The sporangial wall consists two parts, a thin-walled **stomium** and thick-walled **annulus**.