

CHLORELLA

Preparation of Slide:

- (i) Take a drop of water containing **Chlorella** on a clean slide.
- (ii) Cover it with cover slip and observe under microscope.

Characters:

1. It is a fresh water green alga.
2. It is unicellular i.e. consists of single cell.
3. The cell is spherical and covered by cell wall.
4. In the cell cytoplasm is present which contains a complete nucleus.
5. In the cytoplasm a cup-shaped chloroplast is present. It contains chlorophyll and manufactures food material.

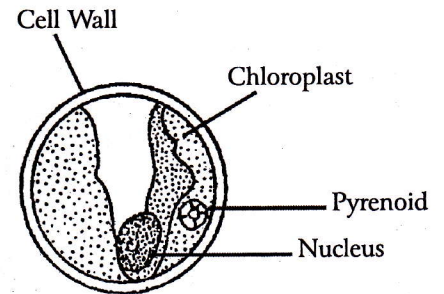


Fig. 9: **Chlorella Vulgaris**,
A Single Cell

EUGLENA

Characters:

1. It is roughly spindle-shaped cell wall is absent and covered by plasma membrane. Below plasma membrane **pellicle** is present.
2. Its upper end is blunt and lower end is pointed. It consists of single cell.
3. In the body, cytoplasm is present which contains a nucleus.
4. In the cytoplasm many chloroplasts are present, which manufacture food material. In chloroplast pyrenoid is also present.
5. It has eye spot, sensitive for sunlight.
6. It contains a **contractile vacuole** for excretion.
7. At the anterior end mouth or canal is present.
8. It has one long and one short flagella, i.e. biflagellate.

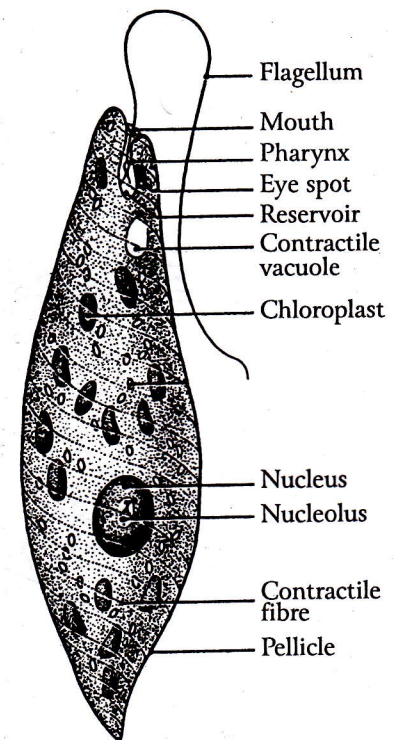


Fig. 10: **Euglena**