

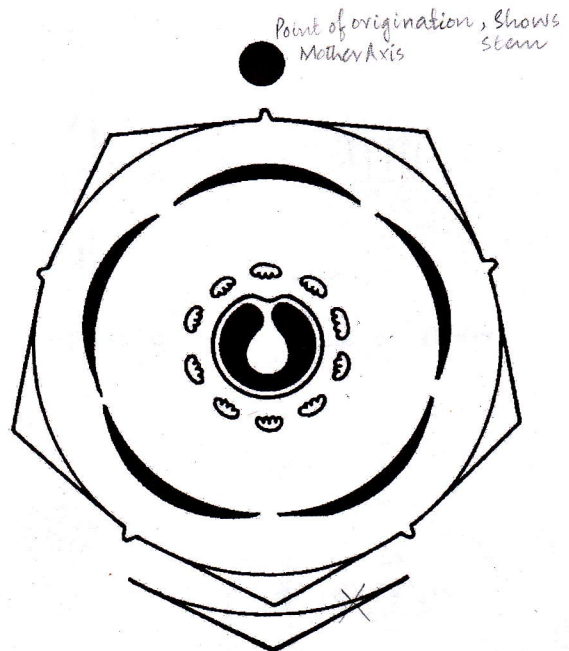
Family: Leguminaceae
 Sub-Family — MIMOSACEAE
 Type — *Prosopis juliflora* (Sindhi Kikar)

Floral Characters:

- Inflorescence:** Spike. *stalkless* ♀
Flower: Sessile or sub-sessile, *bracteate*, bisexual, actinomorphic, hypogynous, small, pale green.
Calyx: 5 sepals, gamosepalous, valvate-aestivation, campanulate (bell-shaped), green.
Corolla: 5 petals, polypetalous, valvate-aestivation, pale green.
Androecium: 10 stamens, polyandrous, filaments long, anther ditheous, *dorsi* ~~basifixed~~.
Gynoecium: Monocarpellary, ovary superior, unilocular, one ovule in the base.
Placentation: Basal. *Marginal*
Floral Formula: \oplus , \ominus , $K_{(5)}$, C_5 , A_{10} , \underline{G}_1



PORTION OF SHOOT
OF PROSOPIS



FLORAL DIAGRAM

Fig. 47: *Prosopis* (Mimosaceae)