


Family — SOLANACEAE

Type — *Datura alba* (Thorn Apple)

Floral Characters:

- Inflorescence:** Solitary axillary cymose. 
- Flower:** Pedicellate, complete, ebracteate, bisexual, actinomorphic, hypogynous, pentamerous.
- Calyx:** 5 sepals, gamosepalous, campanulate (bell-shaped), valvate-aestivation, green.
- Corolla:** 5 petals, gamopetalous, infundibuliform (funnel-shaped), valvate, aestivation, white.
- Androecium:** 5 stamens, polyandrous, epipetalous, alternate with petals, filament long, anthers bilobed, basifixed.
- Gynoecium:** Bicarpellary, syncarpous, ovary superior, the ovary becomes 4-chambered due to the appearance of false septum, many ovules in each chamber.
- Placentation:** Axile.
- Floral Formula:** \oplus , ♀ , $K_{(5)}$, $C_{(5)}$, A_5 , $\underline{G}_{(2)}$

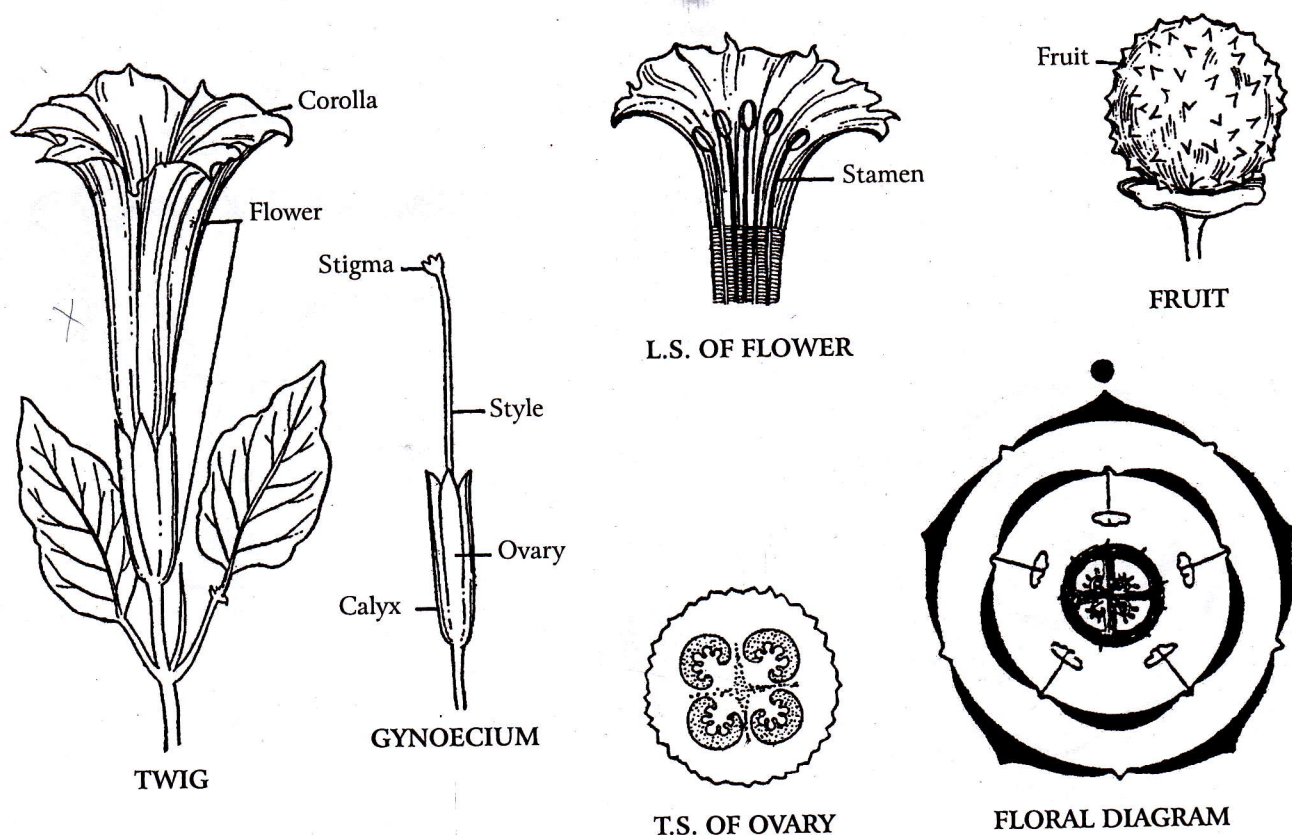


Fig. 41: *Datura alba* (Family Solanaceae) – Different Parts and Floral Diagram