

Family — SOLANACEAE

Type — *Solanum nigrum* (Black Night Shade, Vern Mako)

Floral Characters:

Inflorescence: Axillary cyme.

Flower: Pedicellate, complete, bisexual, actinomorphic, hypogynous, pentamerous, white.

Calyx: 5 sepals, gamosepalous (Fused), aestivation valvate, campanulate, persistent, inferior, hairy, green.

Corolla: 5 petals, gamopetalous, aestivation valvate, rotate, inferior, white.

Androecium: 5 stamens, polyandrous, alternate with petals, epipetalous, filaments, short, pubescent, anthers long, basifixed, united to form a cone like structure.

Gynoecium: Bicarpellary (2 carpels), syncarpous, ovary superior, obliquely placed, bilocular, many ovules in each locule, style long, stigma bifid and capitate.

Placentation: Axile.

Fruit: Succulent, Berry.

Seed: Albuminous

Floral Formula: \oplus , ♀ , $K_{(5)}$, $C_{(5)}$, A_5 , $\underline{G}_{(2)}$

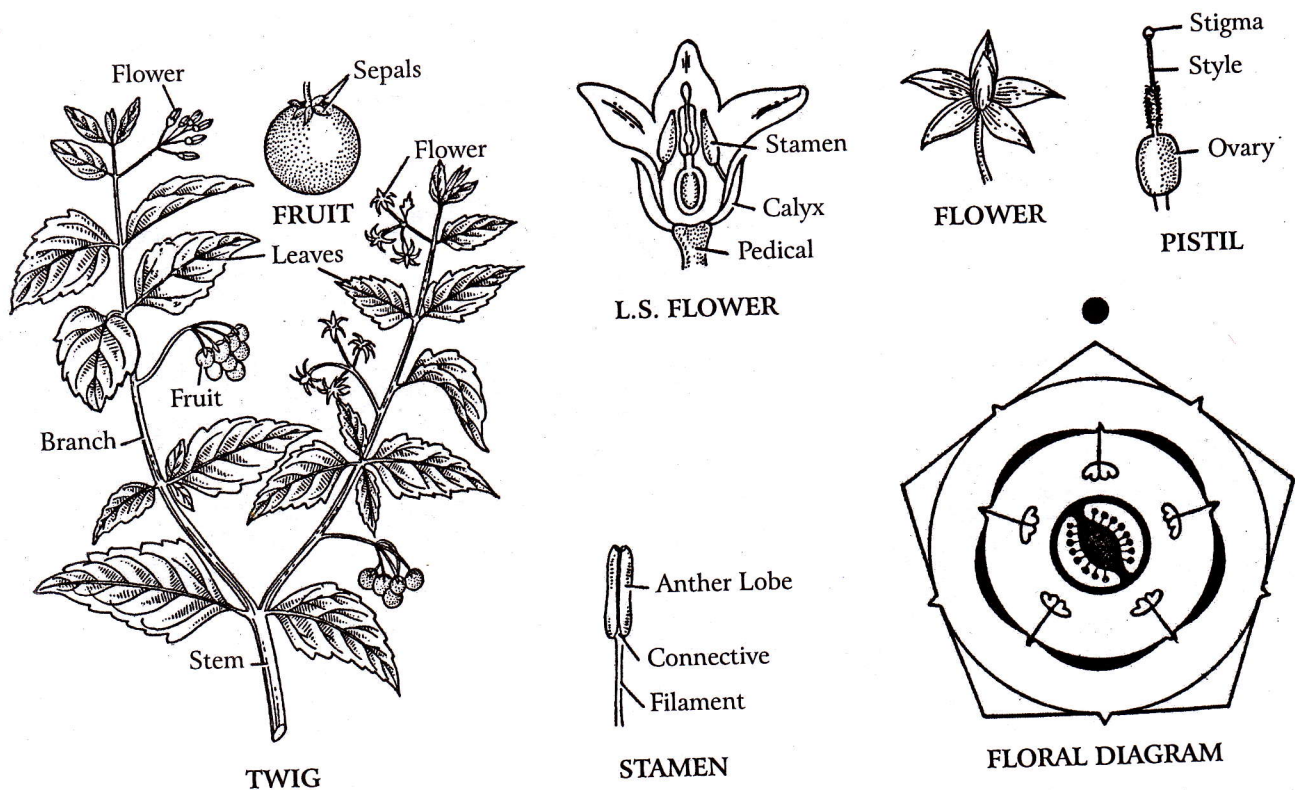


Fig. 39: Solanaceae. *Solanum nigrum* Linn.; Eng., Black Nightshade; Verna., Makoi