

ULOTHRIX

Preparation of Slide:

- (i) Take material of Ulothrix on a clean slide.
- (ii) Cover the material with cover slip and observe under microscope.

Characters:

1. It is a fresh water, green alga.
2. Its body consists of an unbranched filament.
3. The filament consists of many cells, arranged in the form of a row.
4. The basal cell is called **hold fast**. It helps in the attachment of filament to any solid object.
5. Each cell is rectangular in shape, covered by cell wall.
6. In the cell, cytoplasm is present, which contains a nucleus.
7. In the cytoplasm a collar-shaped or girdle-shaped chloroplast is present, which manufactures food. *somewhat cylindrical*
8. The chloroplast also contains pyrenoid.

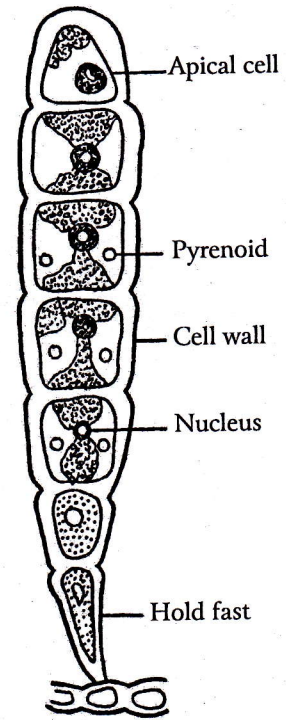


Fig. 11: Ulothrix – A Filament

ULVA

Characters:

1. It is a green alga, called **sea-lettuce**.
2. Its body is called **Thallus**, it is branched and consist of expanded sheet with irregular margin.
3. The thallus is of two types **sporophyte** with 26 chromosomes and **gametophyte** with 13 chromosomes.
4. The lower part of thallus is called **hold fast**. It helps in the attachment of thallus with a solid object.
5. The sporophyte and gametophyte are morphologically similar, so they are isomorphic.

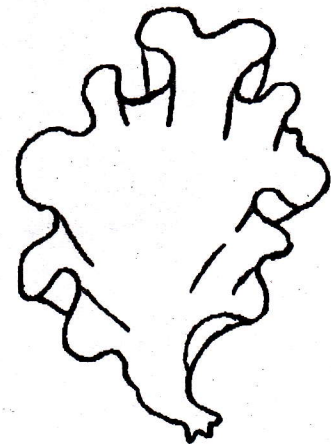


Fig. 12: Ulva